

City of Belpre, Ohio

Storm Water Management Plan



In accordance with
Ohio EPA NPDES General Permit No. OHQ000004
*Facility Number 0GQ00003*DG*

STORM WATER MANAGEMENT PLAN

CITY OF BELPRE, OHIO

Certification

“As the Safety Service Director of the City of Belpre, Ohio I certify under penalty of law that this document and all attachments were prepared under my direction or supervision in accordance with a system design to assure that qualified personnel properly gathered and evaluated information submitted. Based on my inquiry of the person or persons who manage the system, or those persons directly responsible for gathering the information, information submitted is, to the best of my knowledge, true, accurate, and complete. I am aware that there are significant penalties for submitting for submitting false information, including the possibility of fine and imprisonment for knowing violations.”

Connie J. Hoblitzell

Connie Hoblitzell
Safety Service Director
City of Belpre, Ohio

Overview

The City of Belpre is required to hold an Ohio EPA National Pollution Discharge Elimination System (NPDES) General Permit for Small Municipal Storm Sewer Systems (MS4). As part of the requirements of this permit the City is required to develop and maintain a Storm Water Management Plan (SWMP).

An SWMP is:

- Designed to reduce the discharge of pollutants to the maximum extent practicable (MEP) in order to protect water quality.
- Required by the Ohio EPA NPDES General Permit for Small Municipal Storm Sewer Systems (MS4).

This SWMP is the basic frame work for the City of Belpre's Storm Water Program. It follows the requirements of the current MS4 permit, OHQ000004 and is divided into six minimum control measures (MCM). They are:

- Public Education & Outreach
- Public Involvement / Participation
- Illicit Discharge Detection and Elimination
- Construction Site Storm Water Runoff Control
- Post Construction Storm Water management
- Pollution Prevention / Good Housekeeping.

The SWMP is a living document subject to change with input from the Storm Water Task Force, and Ohio EPA requirements.

Not Covered under this SWMP:

The Belpre WWTP holds an Individual Wastewater Discharge Permit covering parts I, II, III, IV, V, and VI. This suffices for the storm water requirements for the WWTP.

City of Belpre Waste Water Treatment Plant

Mailing: 715 Dr – PO Box 160

Location: 1400 Blennerhassett Ave., Belpre. OH 45714

OPD00027*ID Application # OH0020621

Issued July 30, 2018 Effective September 1, 2018 Expires August 31, 2023

History to Current

An SWMP was originally developed in 2003 by the City Safety Service Director, utilizing current practices that were employed by the City of Belpre Departments and by the Washington Soil and Water Conservation District, a local agency.

In 2003 the City of Belpre submitted a SWMP and Notice of Intent (NOI) to obtain coverage under Ohio EPA NPDES General Permit No. OHQ000001. This MS4 general permit had a 5 year term running from December 27, 2002 through December 26, 2007. A permit was issued April 1, 2003

In 2009 the City of Belpre submitted a Notice of Intent (NOI) to obtain coverage under Ohio EPA NPDES General Permit No. OHQ000002. This MS4 general permit had a 5 year term from January 30, 2009 through January 29, 2014. A permit was issued May 26, 2009. *Note: From December 26, 2007 through January 30, 2009. The OHQ000001 permit remained in effect until the OHQ000002 permit was made available by Ohio EPA in 2009.*

In 2015 the City of Belpre submitted a Notice of Intent (NOI) to obtain coverage under Ohio EPA NPDES General Permit No. OHQ000003. This MS4 general permit had a 5 year term from September 10, 2014 through September 10, 2019. A permit was issued February 23, 2015. *Note: From January 29, 2014 through September 14, 2014, the OHQ000002 permit remained in effect until the OHQ000003 permit was made available by Ohio EPA in September of 2014.*

In 2021 the City of Belpre submitted a Notice of Intent (NOI) to obtain coverage under Ohio EPA NPDES General Permit No. OHQ000004. This MS4 general permit has a 5 year term from April 1, 2021 to March 31, 2026. A permit was issued May 4, 2021. *Note: From September 10, 2019 through March 31, 2021, the OHQ000003 permit remained in effect until the OHQ000004 permit was made available by Ohio EPA in April 2021.*

The current SWMP has been updated with input from the City of Belpre Storm Water Task Force, guidelines from the annual report form, and Ohio EPA requirements. It continues to be a living document subject to change.

Legal Authority

The City of Belpre has the legal authority to implement the following Storm Water Management Plan (SWMP) under Article XVIII of the Ohio Constitution, which provides municipalities the authority to exercise all powers of local self-government and to adopt and enforce within their limits land use and control measures for promoting peace, health, and safety.

Development and implementation of a SWMP is required by the City of Belpre to obtain coverage under the Ohio EPA's NPDES OHQ000004 to discharge storm water from the City's MS4. The SWMP includes management practices, control techniques and engineering methods to protect water quality and reduce the discharge of pollutants from the municipal separate storm sewer system (MS4) into surface receiving waters of the state.

Permit Coverage

Political Facts

- Located in Southeastern Ohio adjacent to the Ohio River, 14 miles downriver from Marietta, Ohio and across the Ohio River from Parkersburg, WV.
- Population 6,728 (2020 U.S. Census)
- Size is 3.48 square miles (2227.2 acres)
- Second United States settlement in the Northwest Territory after Marietta
- A part of the Parkersburg-Marietta-Vienna Metropolitan Statistical Area as defined by the United State Census Bureau.

Drainage Area

- Encompasses business, homes, and industry. The area is part of two US Geological Survey Watersheds.

Mile Run - Ohio River, Hydrological Unit Code 050302020102

Sandy Creek - Ohio River, Hydrological Unit Code 050302020106

(The U.S. Geological Survey designated 12 digit unit code is used to determine watersheds within larger drainage areas as portions of 8 digit unit codes within states)

- Named streams include: the Ohio River, Congress Run and Mile Creek. There are unnamed streams that drain to each meandering through the city's system of culverts and ditches. See Appendix 1.

Storm Water Task Force

The City of Belpre, under the direction of the Safety Service Director, has formed a storm water task force to aid in the contents and administration of the Storm Water Management Plan. Members meet on an as needed basis, as a group, or individually, with the Storm Water Coordinator to assist in the overall operation of the storm water program. They are as follows:

Position	Overall Duties (Storm Water)	Contact information
Mayor	Overall operation and promotion of the City Departments.	740-423-7592
Safety Service Director	MS4 Permit Applicant. Responsible for the overall management of the program & depts. and enforcement of construction / post construction sediment erosion control ordinance.	740-423-7592
Utilities Director	Operation of the Water & Sewer Dept. and the Waste Water Treatment Plant.	740-423-6845
Washington SWCD Storm Water Coordinator	Annual Storm Water Report, Storm Water Management Plan updates, City Dept. Trainings & Storm Water O&M Programs, Educational Venues, Construction / Post Construction Inspections, Overall Guidance for Minimum Control Measures 1 - 6	740-885-3312
Streets Department Foreman	City Streets, sidewalks, parking lots and right of ways, Storm Drains maintenance & construction.	740-423-4464
Chief of Police	Operation of the Police Department	740-423-7631
Health Department Sanitarian	Home Sewage Treatment Systems, Lateral Overflows	740-423-7592 740-373-0611 x 2303
Fire Chief	Operation of the Fire Department	740-423-7592
City Solicitor	Reviews legislation, interprets ordinances for compliance	740-423-9548 740-423-7592
Council Person	Input from the private sector.	Contact Safety Service Director
Code Enforcement Officer	Illicit Discharge Complaint related to storm water	740-423-7592
Waste Water Operator of Record	Educational opportunities for youth. Management of storm water duties with the Individual Discharge Permit.	740-423-9941
Deputy Auditor	Provides input for educational opportunities within the City. Assist with disposal documentation.	740-423-7592

Partnerships

Numerous agencies, organizations, businesses, and schools share information of their efforts towards preventing storm water runoff pollution, and, or allow the City of Belpre to provide educational opportunities to their associates with the goal of preventing storm water runoff pollution.

<p>Belpre City Schools Belpre Elementary 2000 Rockland Ave. Belpre, OH 45714 740-423-3010 <i>Allows storm water education in the school</i></p>	<p>Marietta / Belpre Health Department 304 Putnam Marietta, OH 45750 740-423-7592 740-373-0611 <i>Sanitarian Services.</i></p>
<p>Washington Soil and Water Conservation District 21330 SR 676 Ste. E Marietta, OH 45750 740-373-4857 x 3 <i>MOU to provide assistance with all minimum control measures, the annual report and the SWMP</i></p>	<p>City of Belpre Tree Commission PO Box 160 715 Park Drive Belpre, OH 45714 740-423-7592 <i>Provides direction and attention to the maintenance to the City of Belpre's urban forest.</i></p>
<p>Beautify Belpre PO Box 160 715 Park Drive Belpre, OH 45714 740-423-7592 <i>Provides a means for citizens to take part in many landscape and beautification projects within the City.</i></p>	<p>SouthEastern Ohio Joint Solid Waste Management District 46049 Marietta Rd, Suite 6 Caldwell, OH 43724-9124 740-732-5493 <i>Provides a means for citizens to dispose of household hazardous waste, and other large recyclable items through special collections.</i></p>
<p>Rumpke Waste & Recycling 28 AW Long Rd Wellston, OH 45692 740-384-4400 800-828-8171 <i>Under contract with the City of provide curbside waste and recycle pickup providing citizens.</i></p>	<p>City of Belpre Storm Water Task Force PO Box 160 715 Park Drive Belpre, OH 45714 740-423-7592 <i>Provides guidance for the City of Belpre's Storm Water Management Plan.</i></p>
<p>Buckeye Hills Regional Council 1400 Pike St., Marietta, OH 45750 740-374-9436 <i>Provides GIS ArcMap mapping advice to the Washington SWCD Storm Water Coordinator.</i></p>	

MS4 Storm Water Discharges / Target Pollutants / TMDL Status

Discharges:

Storm water surface runoff within the city boundaries eventually flows into Ohio River either by direct flow by piped storm drains or open ditches, or through the tributaries of Davis Run and Congress Run.

Potential storm water pollution flowing from the City of Belpre to the Ohio River comes from land use. Impairments have been identified by the storm water task force based information collected appropriate City Departments, the Code Enforcement Officer, and complaints from private citizens. These impairments are due to pollutants.

TMDL Status:

Watersheds: Congress Run is a part of the Hydrological Unit Code 050302020102 also known as Mile Run – Ohio River. Davis Run is part of the Hydrological Unit Code 050302020106 also known as Sandy Creek – Ohio River. (The U.S. Geological Survey designated 12 digit unit code is used to determine watershed within larger drainage areas as portions of 8 digit unit codes within the state.)

According to the Ohio EPA *Water Quality Summary 2014 Integrated Report*, neither watershed has a total maximum daily load (TMDL) assessment report available. Each carry an aquatic life use assessment of WWH (Warm Water Habitat).

Target Pollutants:

Pollutant	Cause	Source
Sediment	<ul style="list-style-type: none"> Disturbed ground. 	<ul style="list-style-type: none"> Construction sites Landscaping projects
Nutrients	<ul style="list-style-type: none"> Sewage (pet waste, human waste) 	<ul style="list-style-type: none"> Septic systems, laterals, pet owners
	<ul style="list-style-type: none"> Fertilizer 	<ul style="list-style-type: none"> Homes & businesses
	<ul style="list-style-type: none"> Yard Waste (grass, leaves, woody debris) 	<ul style="list-style-type: none"> Homes, businesses, city maintenance
	<ul style="list-style-type: none"> Solid waste 	<ul style="list-style-type: none"> Homes, businesses, construction sites
Chemicals	<ul style="list-style-type: none"> Hazardous Waste 	<ul style="list-style-type: none"> Homes, businesses, construction sites
	<ul style="list-style-type: none"> Vehicle fluids (grease, oils, antifreeze) 	<ul style="list-style-type: none"> Homes, businesses, construction sites, City maintenance (parking lots, streets)
	<ul style="list-style-type: none"> Salt 	<ul style="list-style-type: none"> Homes, businesses, city maintenance (ice control for parking lots, sidewalks, streets))
Bacteria	<ul style="list-style-type: none"> Sewage (pet waste, human waste) 	<ul style="list-style-type: none"> Septic systems, laterals, pet owners

The Minimum Control Measures

BMP selection:

BMPs selections are based on appropriate practices already completed by City of Belpre Departments and Partners, those required by the most current OEPA MS4 NPDES Storm Water Permit, and those selected by the Storm Water Task Force. The BMPs were selected to help reduce to the Maximum Extent Practicable (MCP) the target pollutants. They are identified within each minimum control measure of this report. They are as follows:

- Public Education & Outreach
- Public Involvement / Participation
- Illicit Discharge Detection and Elimination
- Construction Site Storm Water Runoff Control
- Post –Construction Storm Water management
- Pollution Prevention / Good Housekeeping.

Decision Process

The statements within each Minimum Control Measure was concluded from working with the City of Belpre Storm Water Task Force with guidance from the OEPA performance standards listed before each Minimum Control Measure.

Evaluation Process

Each BMP activity will be evaluated through the annual reporting process and review with the Storm Water Task Force to determine its effectiveness and changes that may need to be made for the future.

Education

The following Minimum Control Measures will address the education for Illicit Discharges: Public Education & Outreach; Pollution Prevention & Good Housekeeping.

Public Education & Outreach

The City of Belpre supports various public education and outreach activities to educate the general public, the construction industry, and students on storm water pollution.

Performance Standards *At a minimum: Include more than one mechanism; Target five different storm water themes/messages over the permit term; One theme/message targeting the development community; Reach at least 50% of the population over the permit term.*

BMPs / Responsible Party	Audiences	Why audiences were chosen	Measureable Goals	Themes or Message	Target Pollutants
Presentations/ Washington SWCD	Students Adults	To promote problem solving & pollution prevention among our youth	3 presentations / yr	Solutions to protect runoff for the protection of potable water & aquatic life.	Sediment Nutrients Chemicals Bacteria
Social Media/ Washington SWCD & Safety Service Director	Residents Businesses Contractors Engineers	All have the potential to contribute to & reducing storm water runoff pollution	City Website Articles – Ongoing; Facebook Posts – 2 per year	Storm Water BMPs: Volunteering; Landscaping; Construction; Disposal . Recycle; Commercial; Pet Waste; Septic Systems; Auto / Equipment Maintenance; Lawn Care	Sediment Nutrients Chemicals Bacteria
Signage/ Washington SWCD & Streets Dept.	Residents Businesses	To promote proper handling of waste	Pet Waste Signs – ongoing; Household Hazardous Waste Collections – biannually	To promote proper handling of waste	Sediment Nutrients Chemicals Bacteria
Direct Mailing/ Washington SWCD	Home Sewage Treatment System owners	To reduce the potential for excessive nutrients & bacteria from failing HSTS	HSTS Maintenance Guidance Brochure 1 / permit cycle	Proper maintenance of Home Sewage Treatment Systems to reduce storm water contamination	Nutrients Bacteria
	Licensed dog owners within the City	Excess dog waste reported by City workers	Pet Waste Brochure 2 / permit cycle	Proper disposal of pet waste to reduce water contamination	Nutrients Bacteria
	Residents Businesses	To educate about the benefits of healthy trees to reduce storm water pollution	Tree City USA Brochure 1 / permit cycle	Benefits of a healthy tree community can benefit the quality of storm water runoff.	Sediment Nutrients
	Residents Businesses	Excessive grass clippings are reported by Code Enforcement	Lawn Care / Landscaping Brochure 1 / permit cycle	Lawn care & landscaping practices reduce storm water pollution	Sediment Nutrients Chemicals
	Residents Businesses	Will reach the majority of residents & businesses on a yearly basis	Message in water bill mailing 1 / yr	Storm Water Protection theme suggested by the Storm Water Task Force	Sediment Nutrients Chemicals Bacteria
Construction Community Presentation / Washington SWCD	Construction industry doing work in Belpre.	To assist Developers, Engineers, & Contractors to comply with Storm Water Regulations	Provide packets explaining Sediment / Erosion Control permitting to interested applicants. Ongoing. Consider an annual power point presentation required viewing for storm water permit applicants & designers.	Construction structural & nonstructural BMPs protecting water resources.	Sediment, Nutrients, Chemicals

Public Participation and Involvement

The City of Belpre supports and encourages various public participation and involvement activities to involve the general public, students & businesses. This is tied to the Public Education and Outreach Minimum Control Measure with the concept that an educated public will more likely get involved and participate in activities geared to reducing pollutants in storm water runoff.

Performance Standards *At a minimum: Five public involvement activities over the permit term. (permit term is 5 years)*

BMPs / Responsible Party	Audience	Measurable Goal
Storm Water Task Force / Washington SWCD	13 members appointed by administration	Meet as a group or individually with members for guidance with the program
Solid Waste Disposal & Recycling Service / Safety Service Director	Residents Businesses	Document amount disposed & recycled within the City of Belpre
Solid Waste Clean-ups / Various Groups & Washington SWCD	Residents Businesses Civic Organizations	Document number of volunteers, amount collected and properly disposed. Yearly following special events & other events directed by the Storm Water Task Force
Special Collections / SouthEastern Ohio Joint Solid Waste Management District	Residents Businesses	Document amount collected from biannual household hazardous waste collection, & annual computer, TV & appliance collections (county)
Landscaping Practices on City Property / Belpre Tree Commission & Beautify Belpre	Residents Businesses	Document volunteers managing vegetation on City-owned property to benefit storm water quality

Illicit Discharge Detection and Elimination

The detection of illicit discharges is imperative if pollution is to be eliminated from storm water runoff and receiving waters. This requires ordinances that prohibit illegal and illicit discharges into the City's (MS4) storm water conveyance system.

Performance Standards *Include: Dry-weather screening of all of your storm water outfalls over the permit term; Establish priorities & specific goals for long-term system – wide surveillance of your MS4; Specific investigations of outfalls & their tributary area where previous surveillance demonstrates a high likelihood of illicit discharges; Data collected each year shall be evaluated & priorities & goals shall be revised annually based on this evaluation; Storm sewer system map shall be updated annually as needed.*

BMPs / Responsible Party	Measurable Goal
Ordinance / Safety Service Director & City Attorney	<p>Adhere to the following:</p> <p>Chapter 1337 of the City of Belpre Codified Ordinance, "Construction Site and Post Construction Soil Erosion, Sediment and Other Wastes and Storm Water Runoff", addresses discharges to the storm drain system.</p> <p>Chapter 931.03 of the City of Belpre Codified Ordinance, "Use of Public Sewers", prohibits and regulates the discharge of wastewater or other polluted waters into any natural waters.</p> <p>Section 3707.01 of the Ohio Revised Code states: "The Board of Health of a city or general health district shall abate and remove all nuisances within its jurisdiction." As a representative of the City Board of Health, the Sanitarian has the authority to abate nuisances within its jurisdiction.</p> <p>Section 3701.06 of the Ohio Revised Code states: "The director of health and any person authorized by him may, without fee or hindrance, enter, examine, and survey all grounds, vehicles, apartments, buildings, and places in furtherance of any duty laid upon the department of health or where he has reason to believe there exists a violation of any health law or of the sanitary code."</p>
Storm Sewer System Map / Streets Dept., Washington SWCD, Safety Service Director	<ul style="list-style-type: none"> • The City utilizes a previously created GIS Storm Sewer System Map. • The information has been uploaded to the current IAM GIS System. • The updated shape file is uploaded to the Washington SWCD ArcMap System to use during outfall checks. • The Street's Foreman updates the storm drain system information as needed. • The system shows drains, outfalls, and connections. • The system is used to trace illicit discharges.
HSTS Mapping and List / Marietta Belpre Health Dept. & Washington SWCD	<ul style="list-style-type: none"> • The Marietta / Belpre Health Dept. operates under the jurisdiction of the Ohio Department of Health. • The Health Dept. evaluates HSTS systems on complaint or on a sale of property. • The Health Dept. maintains an electronic map of the HSTS Locations via the Washington SWCD. • The map is updated annually by the Washington SWCD with guidance from the Health Dept. Sanitarian. It can be viewed upon request from the Washington SWCD or the Health Dept. Sanitarian. • The shape file is maintained in Arc Map and will be shared to the current IAM GIS program and will be updated annually. • The City Sanitarian maintains a list of HSTS systems that document the following: system type; maintenance schedule; discharge location; on or off lot discharge status; receiving waters via a ditch of stream; size of conduit / ditch. As missing information for each becomes available it is documented. • There are currently 6 systems. As new HSTS systems are discovered they are added to the list and map. As current HSTS systems are removed, they are deleted from the list and map.

<p>Illicit Discharge Detection & Elimination Plan / Marietta Belpre Health Dept., Code Enforcement, City Departments, Washington SWCD</p>	<p>Failing HSTs: Addressing, Tracing, Removal & Evaluation: Complaints from citizens or City Departments are routed to the City Sanitarian. Complaints are field verified followed by a resolution to the discharge. If needed, the Sanitarian, Streets Dept., and the Water and Sewer Dept. work together to trace sewage illicit discharges through dye testing, smoke testing, camera tracking and visual tracking. Field verification is made by the Sanitarian. The Sanitarian prepares and sends a letter to the landowner ordering the system be corrected. Follow up is made by the Sanitarian until the discharge is corrected. The owner is required to provide verification of the repaired system. The City Sanitarian tracks the removal of illicit discharges from failing HSTs from complaints to corrections.</p> <p>Dumping & Spills Addressing, Tracing, Removal & Evaluation: Complaints from citizens or city departments are routed to the Code Enforcement Officer. Complaints are field verified followed by a resolution to the discharge. The Code Enforcement Officer, Streets Dept., and the Water & Sewer Department work together to trace illicit discharges through dye testing, smoke testing, camera tracking, and visual tracking. Cleanup is done by the streets department. The City of Belpre's ordinances support enforcement proceedings. An investigation by the City Police, and Streets Dept. could be done to gather facts in support of criminal and possibly civil prosecution to recovery clean-up costs. The City of Belpre Fire Department is trained in the handling of Hazardous materials and is available to city department for assistance in clean-up activities associated with hazardous materials from dumping and spills. The City Code Enforcement Officer, and Departments record actions as part of their O&M Programs (see the Pollution Prevention Good Housekeeping measure)</p> <p>Dry Weather Screening: Screenings are completed on all outfalls once during the permit cycle, and on complaint. Routine screenings are made 3 days following a rain event. If discharge is detected, the discharge is noted for color, odor, floatables, A list of outfalls is kept indicating results. The storm drain map is used to track pollution or the justification for flow. See Exempt Illicit Discharges. Enforcement proceedings follow ordinance guidelines depending on the nature of the illicit discharge.</p> <p>Establishing Priority Areas: To facilitate dry weather screenings of outfalls, the Washington SWCD will consult with the City Sanitarian for failing HSTs areas and the W&S Dept. for older sanitary line areas to establish priority areas. This will be evaluated prior to doing any dry weather screening.</p>
<p>Exempt Illicit Discharges / City of Belpre & Ohio EPA</p>	<p>Exempt Illicit Discharges Water line flushing; landscape irrigation; diverted stream flows; rising ground waters; uncontaminated ground water infiltration; uncontaminated pumped ground water; discharges from potable water sources; foundation drains; air conditioning condensation; irrigation water; springs; water from crawl space pumps; footing drains; lawn watering; individual residential car washing; flow from riparian habitats and wetlands; dechlorinated & desalinated swimming pool discharges; street wash water; discharges or flows from fire-fighting activities. (Does not include training for fire-fighting activities)</p>

Construction Site Storm Water Runoff Control

Polluted storm water runoff from construction sites contribute to siltation and sediment build-up in City storm water conveyance systems and ultimately end up in nearby streams and rivers. Other construction wastes, such as oil and grease, concrete truck washout, debris, and construction related chemicals can also lead to the impairment of nearby streams and rivers in a short period of time. The objective of the Construction Site Runoff Control measure is to develop, implement, and enforce a program to reduce pollutants into storm water runoff from construction activities resulting in a land disturbance of greater than 1/2 acre.

Performance Standards *Include: Pre-construction storm water pollution prevention plan review of all projects from construction activities that result in a land disturbance of greater than or equal to ½ acre; Applicable sites shall be initially inspected; Follow-up inspections shall be on a monthly basis unless you document your procedures for prioritizing inspections such as location to a waterway, amount of disturbed area, compliance of site, etc.*

BMP / Responsible Party	Measurable Goal
Ordinance / Safety Service Director & City Attorney	The <i>Construction Site and Post Construction Soil Erosion, Sediment and Other Wastes and Storm Water Runoff</i> ordinance (Storm Water Ordinance) has been developed and implemented to reduce pollutants in any storm water runoff to the City of Belpre from construction activities that result in a land disturbance of ½ acre or more. See Chapter 1337.01 – 1337.04 of the City of Belpre Codified Ordinances. The requirements of this ordinance are designed to meet the most current Ohio EPA NPDES General Storm Water Permit for Construction Activities. This ordinance was passed March 12, 2012 with one update in February 9, 2015 reducing the land disturbance from 1 acre to ½ acre and requires a permit from the City prior to any land disturbance.
Compliant Process/ Safety Service Director	Complaints by City personnel or the public are routed to the Safety Service Director or Code Enforcement Officer. A field verification is made by City of Belpre personnel or the Washington SWCD. Information is relayed to the Safety Service Director for enforcement proceedings should the situation warrant.
Sediment & Erosion Control Requirements, Waste Control Requirements / Safety Service Director	Construction BMPs must follow Chapter 1337.01 – 1337.04 of the City of Belpre Codified Ordinances and the most current Ohio EPA NPDES General Storm Water Permit for Construction Activities. BMPs must be identified in the site Storm Water Pollution Prevention Plan (SWP3). Acceptable construction BMPs are outlined in the most current OEPA Rainwater & Land Development Manual. Construction BMPs outside the Rainwater & Land Development Manual must be approved by the Ohio EPA.
Plan Review Procedures / Safety Service Director & Washington SWCD	A Storm Water Pollution Prevention Plan must be submitted to the City of Belpre for a pre-construction review. A review is completed using with OEPA check sheet for the most current OEPA NPDES General Storm Water Permit for Construction Activities. These will be conducted on 100% of applicants with ½ acres or more disturbed or part of a greater plan of development.
Site Inspection Procedures / Washington SWCD	Inspections will be made at the site as part of the SWP3 plan review, 1 per month during construction until finished, and on complaint. Inspections are completed by the Washington SWCD with reports submitted to the Safety Service Director and those designated by the permit holder.
Enforcement Procedures / Safety Service Director, Code Enforcement, City Attorney	Upon receiving verification of a violation, a letter will be sent to the permit applicant. An appeal may be made within 7 days from the date of the Notice of Violation. A review of the appeal shall take place within 15 days by the City designated authority.

Post-Construction Storm Water Management

Areas of development and redevelopment have shown to adversely affect lakes, rivers and streams due to the increased pollutant load in storm water runoff from parking lots, rooftops, and other impervious areas. In addition, in these areas, storm water runoff moves faster creating downstream flow problems not only in storm water conveyances, but also in receiving waters where banks erode and stream channels are compromised. Post-construction practices designed to treat the “first flush” of storm water and hold the necessary volumes of water for a slower release, are needed to maintain the integrity of receiving waters and protect the infrastructure of MS4 communities.

Performance Standards *Include: Pre-construction storm water pollution prevention plan review of all projects from construction activities that result in a land disturbance of greater than or equal to 1/2 acre to ensure that required controls are designed per requirements; Applicable sites shall be inspected to ensure that controls are installed per requirements; Ensure that long-term operation and maintenance (O&M) plans are developed and agreements in place for all applicable sites.*

BMP / Responsible Party	Measurable Goal
Ordinance / Safety Service Director & City Attorney	The <i>Construction Site and Post Construction Soil Erosion, Sediment and Other Wastes and Storm Water Runoff</i> ordinance (Storm Water Ordinance) has been developed and implemented to reduce pollutants in any storm water runoff to the City of Belpre from post-construction activities that result in a land disturbance of ½ acre or more. See Chapter 1337.01 – 1337.04 of the City of Belpre Codified Ordinances. The requirements of this ordinance are designed to meet the most current Ohio EPA NPDES General Storm Water Permit for Construction Activities. This ordinance was passed March 12, 2012 with one update in February 9, 2015 reducing the land disturbance from 1 acre to ½ acre. The ordinance can be viewed via the city website: www.cityofbelpre.com and follow the prompts for City Codified Ordinances.
Post-Construction Requirements / Safety Service Director	Post Construction BMPs must follow Chapter 1337.01 – 1337.04 of the City of Belpre Codified Ordinances and the most current Ohio EPA NPDES General Storm Water Permit for Construction Activities. BMPs must be identified in the site Storm Water Pollution Prevention Plan (SWP3). Acceptable post construction BMPs are outlined in the most current OEPA Rainwater & Land Development Manual. Post Construction BMPs outside the Rainwater & Land Development Manual must be approved by the Ohio EPA.
Site Plan Review Procedures / Safety Service Director	Post-construction plans are reviewed for compliance as part of the site plan review. A review is completed using with OEPA check sheet for the most current OEPA NPDES General Storm Water Permit for Post Construction Activities. These will be conducted on 100% of applicants with ½ acres or more disturbed or part of a greater plan of development
Site Inspection Procedures / Washington SWCD & Safety Service Director	Post-construction inspections are completed as part of the routine monthly site inspections during construction, on complaint, and as identified in the maintenance agreement with the post-development landowners.
Enforcement Procedures / Safety Service Director, Code Enforcement, City Attorney	Upon receiving verification of a violation, a letter will be sent to the permit applicant. An appeal may be made within 7 days from the date of the Notice of Violation. A review of the appeal shall take place within 15 days by the City designated authority.
Long-term O&M Plans & Agreements / Safety Service Director	A long-term Operation & Maintenance agreement is required on all post construction practices. A Certification of Installment is required by the designer. This is to certify that the practice was installed correctly. An agreement between the City of Belpre and the post-development landowner is required to follow the Operation & Maintenance agreement is required.

Pollution Prevention / Good Housekeeping for Municipal Operations

The pollution prevention and good housekeeping for municipal operations requires the City of Belpre to evaluate and modify procedure and operations, if necessary, to reduce the amount of storm water pollution generated from day to day operations. The goal of this minimum control measure is to reduce pollutant runoff from municipal operations and increase employee awareness of storm water quality initiatives and provide training.

Performance Standards *Include: Annual employee training; Operation and maintenance program shall include appropriate documented procedures, controls, maintenance schedules & record keeping.*

BMP / Responsible Party	Measurable Goal
Employee Training Program / Washington SWCD	<ul style="list-style-type: none"> • Annually train > 50% of employees in the Public Works Dept. (Streets; Utilities; Equipment Maintenance Public Facilities Divisions); Water Treatment & Distribution Dept. by the SWCD. • Trainings provide: Department Storm Water O&M Program updates; Appropriate Storm Water BMP topics. • The Washington SWCD seeks OEPA Continuing Education Credits for the Water Treatment & Distribution Dept. <hr/> <ul style="list-style-type: none"> • Annually train 100% of employees of the Aquatic Center by the Center Management. • Trainings provide: Department Storm Water O&M Program review. SWCD reviews O&M Program with the Aquatic Center Management prior to seasonal trainings.
City (MS4) Maintenance / Identified Departments: Streets; Water & Sewer; Belpre Pool	<p>Each department has an Operation and Maintenance Program designed to prevent and reduce storm water pollution. They address the following in part or whole as it applies to the department:</p> <p><i>Vehicles & Equip. Maintenance</i></p> <ul style="list-style-type: none"> • Wash water to municipal waste • Routine maintenance completed indoors • Leaks contained <p><i>Vegetation Control</i></p> <ul style="list-style-type: none"> • Directional mowing discharging clippings to grassy areas • Trees trimmed as needed • Herbicides not used within 300 feet of potable public water well • Pesticide application license required <p><i>Streets Sidewalk Parking Lot Maintenance</i></p> <ul style="list-style-type: none"> • Sweeping on schedule • Snow removal / salt application as needed • Paving completed per weather conditions <p><i>Storm Drain System</i></p> <ul style="list-style-type: none"> • Cleaned & repaired as needed <p><i>Storage</i></p> <ul style="list-style-type: none"> • Fuel secondary containment • Sweepings & Salt are covered • Appropriate labels are used <p><i>Sediment Stabilization</i></p> <ul style="list-style-type: none"> • Mulched & seeded • Contained with silt fence or socks as needed <p><i>Disposals</i></p> <p>Recycled (metal, oil, antifreeze, lights bulbs); Reused (soil, clean hard fill); Landfill (solid waste) weekly; Sweepings to landfill; Catch basin cleanings to landfill.</p> <p><i>Spills & Illicit Discharge</i></p> <ul style="list-style-type: none"> • Report detected spills & discharge to appropriate personnel via routine inspections or daily assignments.
Police & Fire Departments/ Washington SWCD	Work with Police & Fire Departments to establish guidelines for: Vehicle & Equipment maintenance; Disposals; Spills & Illicit Discharge Detection & Cleanup procedures. <i>Complete by end of 2022</i>

Reporting Requirements

The City of Belpre will submit an Annual Report reflecting storm water activities from January 1 through December 31 of the current year. A report will be submitted to Ohio EPA Southeastern District Office and the Ohio EPA State office, by April 1st of the following year. This will continue for each year of the permit cycle. The Annual Report Form provided by Ohio EPA will be used for the reporting format and will include the following minimum control measures:

Public Education/Outreach

- Each BMP used.
- Theme addressed.
- Target audience.
- Estimate the number of people reached.

Public Involvement/Participation

- Each public involvement activity conducted.
- Brief description of the public activity and target pollutant addressed.
- Number of people participating.

Illicit Discharge Detection & Elimination

- Required ordinances and updates.
- Storm water mapping updates.
- HSTS numbers & mapping updates.
- Number of outfalls dry-weather screened.
- Number of dry-weather flows identified.
- Number of illicit discharges.
- Schedule for eliminating illicit discharges that have been identified if not eliminated.

Construction Site Runoff Control

- Required ordinances with updates.
- Sediment erosion control BMPs and updates.
- Complaint process, number of complaints received and followed up on.
- Plan reviews: number of sites requiring a permit & plans reviewed.
- Inspections: number completed & average frequency.
- Enforcement: number of violation letters issued & enforcement actions taken.
- List of applicable sites within the City of Belpre's jurisdiction.

Post-Construction Storm Water management in New Development & Redevelopment

- Required ordinances with updates.
- Post Construction BMPs and updates.
- Plan reviews: number of sites requiring post construction BMPs & plans reviewed.
- Inspections: number completed & average frequency.
- Enforcement: number of violation letters issued & enforcement actions taken.
- Complaints: number of complaints received and followed up on.
- Long – term Maintenance Agreements: number completed

Documentation for the reports are kept for 5 years per the MS4 permit.

Definitions

BMPs (Best Management Practices) - Schedule of activities, prohibitions of practices, maintenance procedures, and other management practices (both structural and non-structural) to prevent or reduce the pollution of surface waters of the state. BMPs also include treatment requirements, operation procedures and practices to control plant and/or construction site runoff, spillage or leaks, sludge or waste disposal or drainage from raw material storage.

CLEAN WATER ACT - The Federal Water Pollution Control Act (33 U.S.C. 1251 et seq.) and any subsequent amendments thereto.

ILLCIT DISCHARGE – Refers to any discharge to a municipal separate storm sewer that is not entirely composed of storm water, except discharges authorized under an NPDES permit (other than the NPDES permit for discharges from the MS4) and discharges resulting from fire-fighting activities. Any direct or indirect non-storm water discharge to the storm drain system except as exempted by OEPA.

IMPERVIOUS AREA – Areas that do not allow rain water or snow melt to percolate through. Examples: concrete; asphalt; rooftops.

LDO (LAND DEVELOPMENT ORDINANCE) Refers to the current sediment erosion control permit in the City of Marietta.

MS4 (MUNICIPAL SEPARATE STORM SEWER SYSTEM) - Publicly owned facilities by which storm water is collected and/or conveyed, including but not limited to, any roads with drainage systems, municipal streets, gutters, curbs, inlets, piped storm drains, pumping facilities, retention and detention basins, ditches, natural and human-made or altered drainage channels, reservoirs, and other drainage structures.

NOI (NOTICE OF INTENT) – A document that indicates a notice of intent to be covered by a permit.

NPDES (NATION POLLUTION DISCHARGE ELIMINATION SYSTEM) - A regulatory program in the Federal Clean Water Act that prohibits the discharge of pollutants into surface waters of the United States without a permit.

NATIONAL POLLUTANT DISCHARGE ELIMINATION SYSTEM (NPDES) STORM WATER DISCHARGE PERMIT: Means a permit issued by EPA (or by a State under authority delegated pursuant to 33 USC 1342(b)) that authorizes the discharge of pollutants to waters of the United States, whether the permit is applicable on an individual, group, or general area-wide basis.

ODNR (OHIO DEPARTMENT OF NATURAL RESOURCES) – The administrative department of the Ohio state government^[1] charged with maintaining natural resources such as state parks, state nature preserves, state wildlife areas, state forests, and state waterways. It was created in 1949 by the Ohio Legislature.

OEPA (OHIO ENVIRONMENTAL PROTECTION AGENCY) – The administrative department of the Ohio State government responsible for protecting the environment and public health by ensuring compliance with environmental laws. Those laws and related rules outline Ohio EPA's authority and what things the Agency can consider when making decisions about regulated activities.

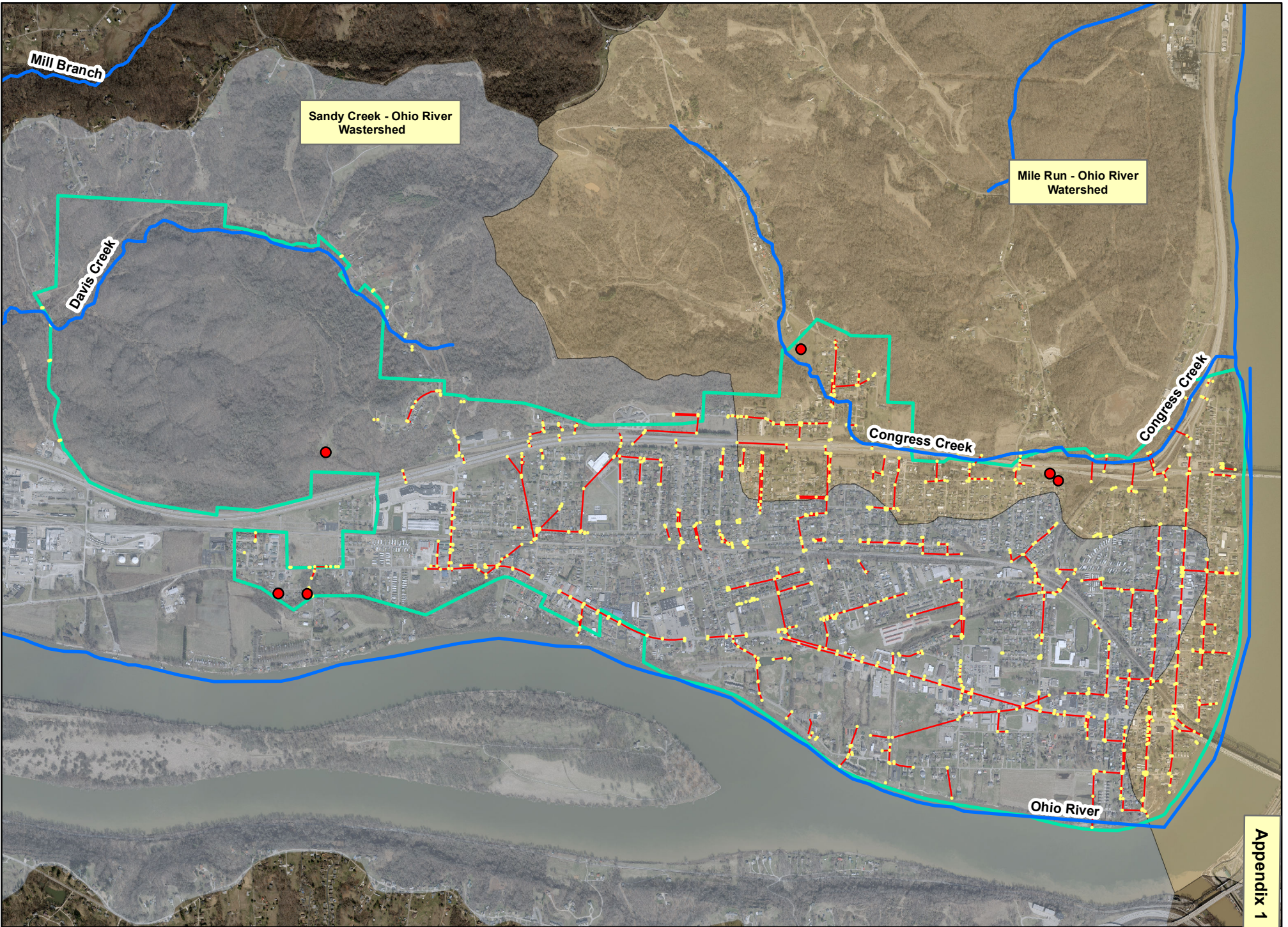
RAINWATER AND LAND DEVELOPMENT MANUAL - A manual describing Ohio's construction and post-construction best management practices and associated specifications. Originally issued by the Ohio Department of Natural Resources, and is now maintained by the Ohio EPA Division of Surface Water Storm Water Section. The most current edition of these standards shall be applicable with this document. It is available through the Ohio EPA.

STORM WATER TASK FORCE COMMISSION – A task force formed by the Mayor under Codified Ordinance No. 116 (12 – 13), Chapter 155. The task for will provide input to City Administration and City Council concerning storm water issues. The commission is made up of 9 members, by position or by appointment by the Mayor.

SWMP (STORM WATER MANAGEMENT PROGRAM) – A plan managing the quantity and quality of storm water runoff from an MS4 community.

SWP3 (STORM WATER POLLUTION PREVENTION PLAN) - A plan designed to address environmental controls on construction sites during and after construction. Utilized by developers, designers, and contractors.


SWCD (SOIL AND WATER CONSERVATION DISTRICT) – Refers to the Washington SWCD. A unit of government dedicated to helping citizens make wise choice about how they utilize the natural resources on their property. Doing so through education or developed services in the areas of agriculture, urban storm water, wildlife, and forestry.



Washington County
City of Belpre

Storm Drain System



Streams


City of Belpre
Boundary


HSTS Locations


2020 Aerials

Scale
1 : 24,000
1" = 2000 feet



Map by Kathy Davis
Washington SWCD

Appendix 1